

A woman with curly hair is looking out of a train window. She is wearing a blue jacket. In the background, a man is visible from behind, looking out the window. The scene is framed by a blue, curved border.

RECLAIMING THE MISSING



Between 2001 – 2005 we had dropped or found missing 73,825 members.

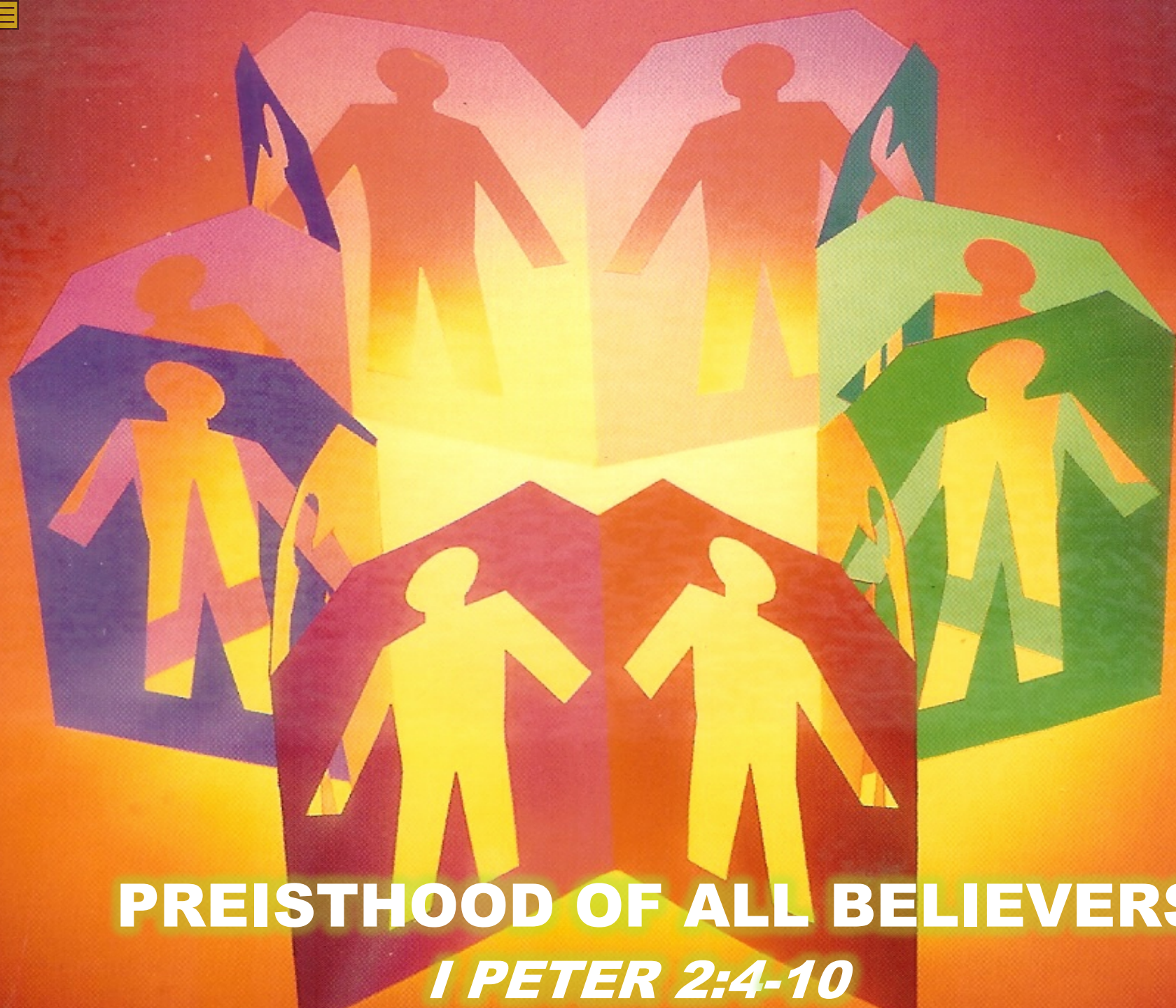


Only about 50% of our members attend church

REACH OUT TO THEM!

**They need
our love,
our acceptance,
and our
concern.**





PREISTHOOD OF ALL BELIEVERS

1 PETER 2:4-10



“As it is written, How beautiful
are the feet of them that preach
the gospel of peace, and bring
glad tidings of good things!”

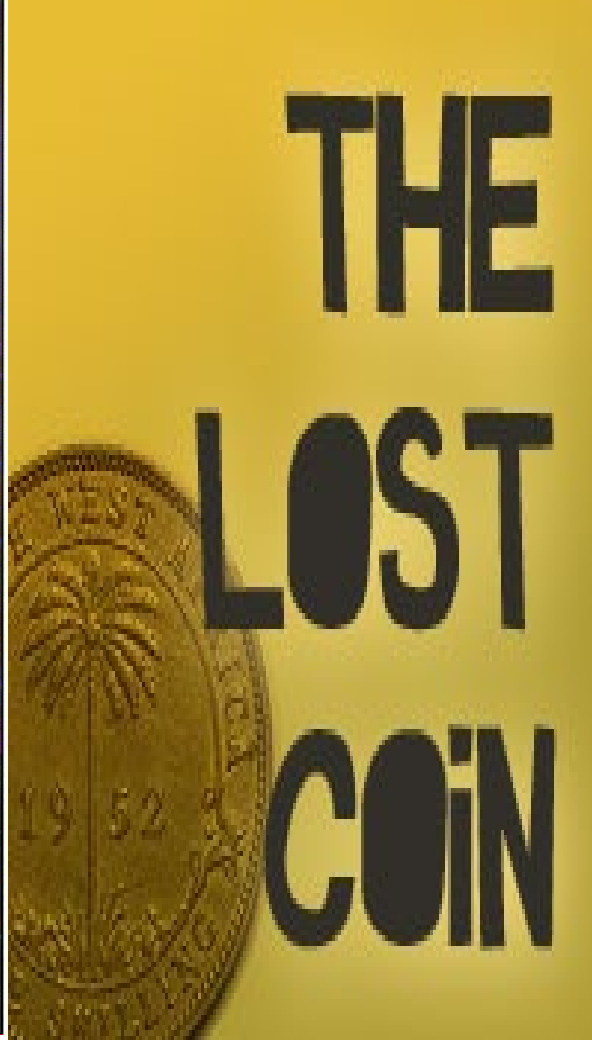
Romans 10:15

Hosea 14:4



**I will heal their
backsliding, I will
love them freely.**





CHRIST LOVES THE DROPOUT



Some of the most effective evangelists in our church have recognized that missing and former members can be the best and most receptive people to work with.



Reasons Why
We Should Not
Neglect Missing
and Former
Members





Reasons Why We Should Not Neglect Missing and Former Members



- 1. Jesus wants them to be part of His Kingdom.**
- 2. They need little instruction.**
- 3. When they return, many become some of the most enthusiastic & dedicated Christians in the church.**

**Why they
leave?**



Why they leave?

1. They have been hurt by someone
2. Perception the church does not care
3. Feels like he/she cannot be forgiven
4. Divorce

The background of the slide features a church building with a prominent steeple on the left side. The sky is a deep blue with soft, white clouds. On the right side, a large, glowing image of Jesus Christ is superimposed, showing him with long hair and a beard, wearing a white robe, with his hands held out in a gesture of blessing or teaching. The overall scene is serene and spiritual.

Why they leave?

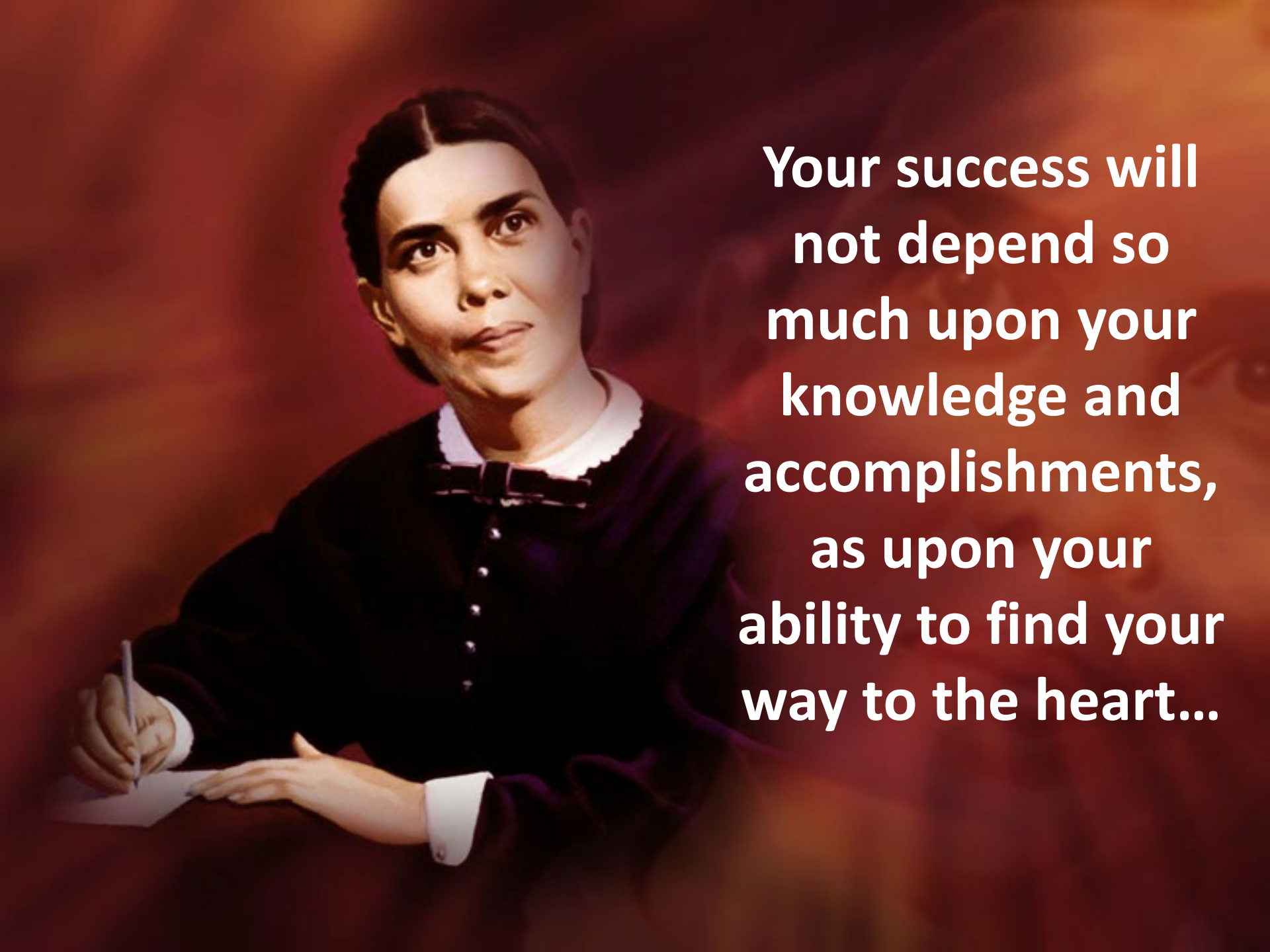
5. They have never been assimilated into the church family
6. Sometimes leave over doctrine
7. Inadequate understanding of the gospel
8. Bored – No Young Adult ministries, etc.



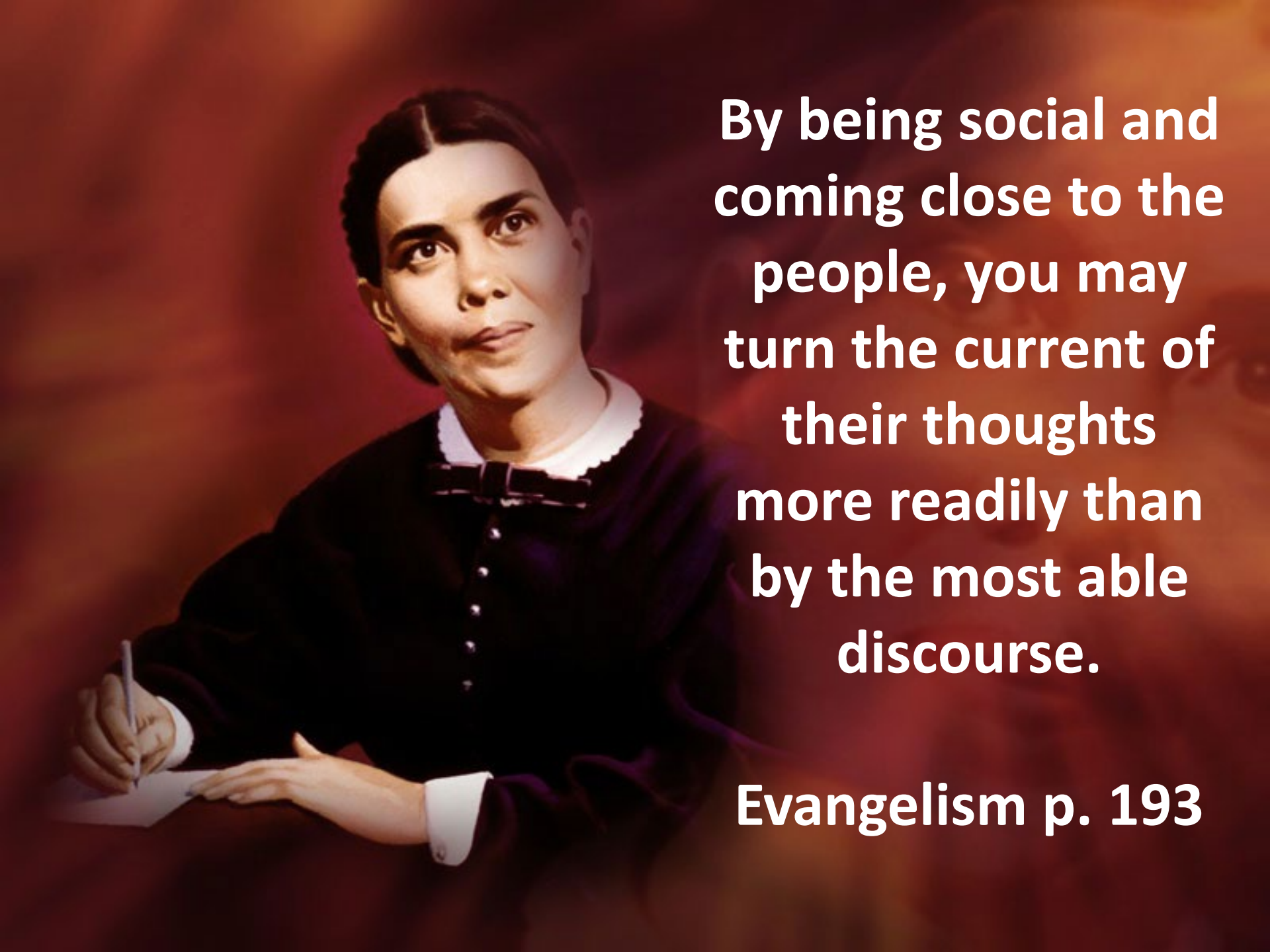
How can we
HELP THEM?





A woman with dark hair pulled back, wearing a dark, high-collared dress with a white ruffled collar and a dark bow at the neck. She is holding a pen in her right hand and writing on a piece of paper. The background is a warm, reddish-brown gradient.

**Your success will
not depend so
much upon your
knowledge and
accomplishments,
as upon your
ability to find your
way to the heart...**

A woman with dark hair pulled back, wearing a dark, high-collared dress with a white ruffled neck and cuffs. She is holding a pen in her right hand and writing on a piece of paper held in her left hand. The background is a warm, reddish-brown gradient.

By being social and coming close to the people, you may turn the current of their thoughts more readily than by the most able discourse.

Evangelism p. 193



F. O. R. T.

Family

Occupation

Religion

Testimony

Gain trust – build confidence





Guidelines for visiting former members



Guidelines For Visiting Former Members



- **Study any information you have about that person; why he/she was dropped from membership, age, hobbies, interests, etc.**
- **Memorize the name and use it during the visit.**
- **Identify yourself and the church at the door. Be warm and friendly.**



Guidelines For Visiting Former Members



- 1. Pray for the infilling of the Spirit for wisdom and Christ like love for former members.**

- 2. Things to remember when visiting with a former member:**
 - a. Do not argue**
 - b. Do not defend yourself, the church, or anyone else.**
 - c. Do not preach that they should look to Jesus instead of at people.**



Guidelines For Visiting Former Members



3. Study any information you have on why they stopped coming, his/her age, and present interests.

The first visit:

- a. May be short (half hour at most)**
- b. Use warmth, tact, and gentleness – no pressure**
- c. Relax, introduce yourself from the S.D.A. Church**



Guidelines For Visiting Former Members



“Good morning! Is this where the Smith’s live? Are you Mr. Smith? We are from the ____ Adventist Church.”

“We don’t plan to stay long, but we do want to visit with you for just a little while. May we step in for a few minutes?”



Guidelines
For
Visiting
Former
Members



Hello, I'm _____ from the
_____ church. I am doing visitation
ministry to find out how our church can better
meet people's needs and would be privileged to be
able to come by and visit you and your family.
When would be a good time to stop by?

Appointment by phone



Guidelines For Visiting Former Members



You might ask the following questions in conversation:

- **Were you reared in the S.D.A. Church?**
- **How old were you when you were baptized?**
- **Did you make your decision to join the church through a series of evangelistic meetings?**
- **Did you go to Adventist Schools?**



Guidelines
For
Visiting
Former
Members



After you have visited for awhile and then seem to be comfortable ask the following question:

There are a lot of reasons why people quit coming to church, would you like to share why you no longer attend?



Guidelines
For
Visiting
Former
Members



**Express appreciation for honesty/don't refute or argue.
"This information will help me in helping others." LISTEN.
If he/she was treated badly, don't take sides. After he/she
is through unburdening his/her heart, you might say, "I
can understand how you might feel that way."**

**(You want to be able to show you care and yet not show
judgment on either side).**



Guidelines
For
Visiting
Former
Members



“May I ask you a personal question? Do you still believe the message the church teaches is still the message God has for the world?”

“ Have you thought about coming back to church?”



Guidelines For Visiting Former Members



If they have interest in returning:

- a. Arrange to take them to S.S. Class or church.**
- b. Leave Signs Digest or a sharing book.**
- C. Start a Bible study**

Find a reason to return again. Give them something to read, listen to or study.

SIGNS OF THE TIMES

HEALTH
LAWS

INNOCENT

LONGING FOR
HEAVEN

JANUARY 2011

WWW.SIGNSTIMES.COM

SIGNS OF THE TIMES

a new
you for the
new year

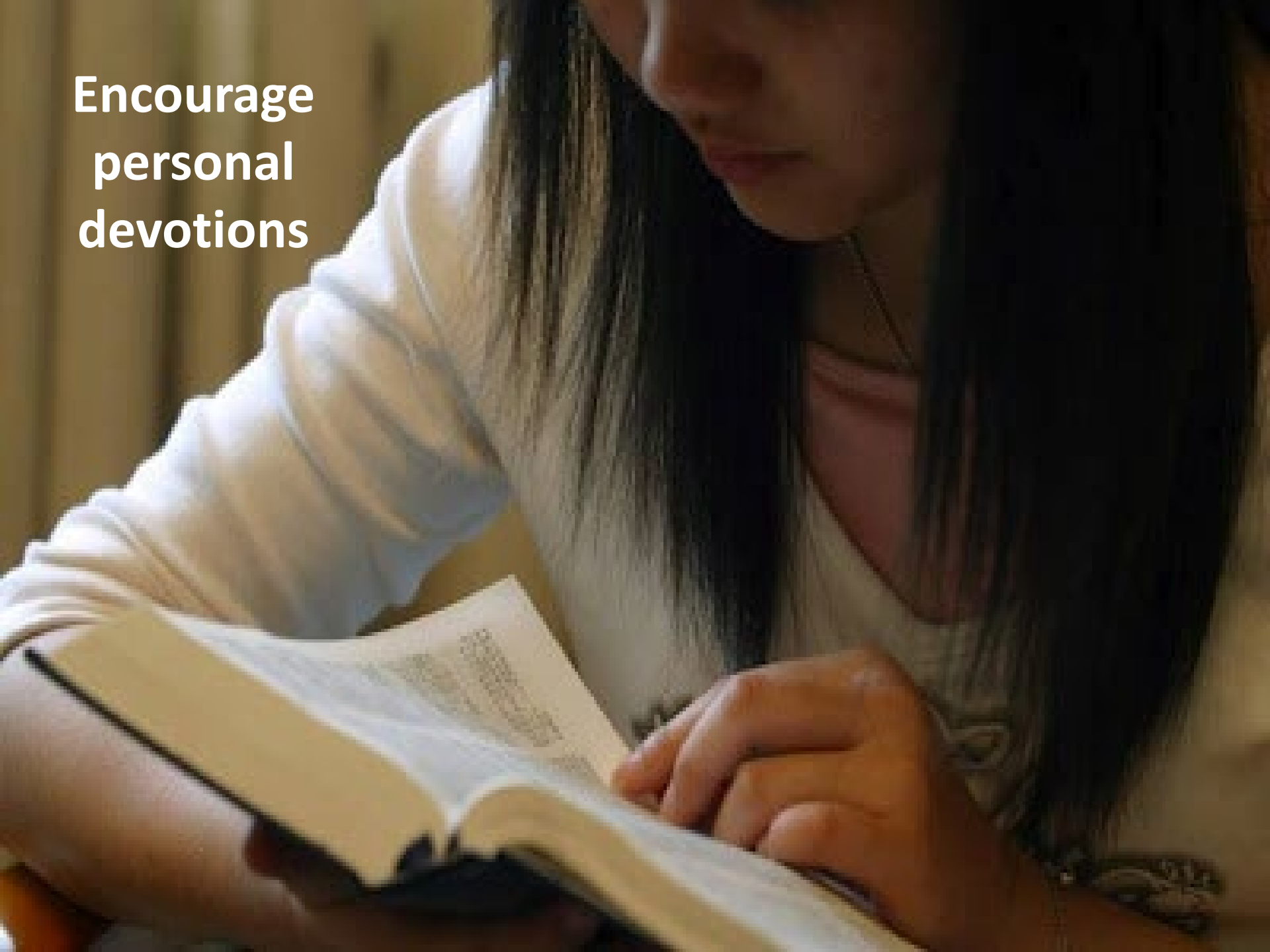
does
prayer
make a
difference?

the Secret
Rapture
is it true?

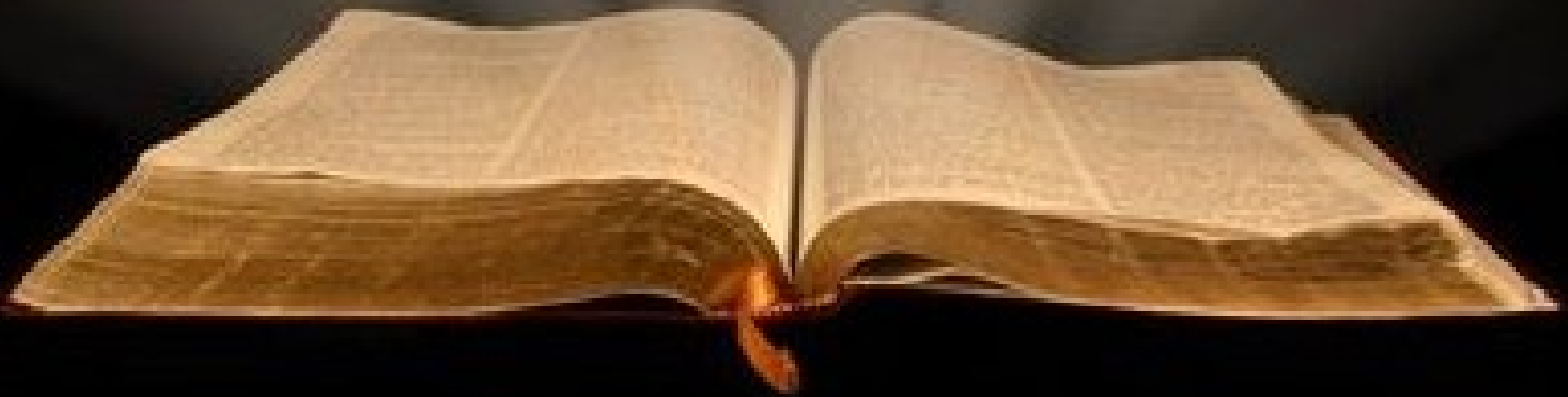
Encourage Bible Study



**Encourage
personal
devotions**



- **Psalm I John 1:9 – Guilt**
- **Psalm 32:8 – Guidance**
- **John 6:37 – Encouragement**
- **Jeremiah 29:11 - Trust**



SHARE BIBLE PROMISES

A woman with curly hair is talking to a man on a train platform. The woman is wearing a blue top and the man is wearing a light-colored shirt. They are standing in front of train tracks. The background is slightly blurred, showing trees and a fence. The image is framed by a blue border with a white outline.

How to locate former Members

- *Get a complete membership list.*
- *review each name with a small committee consisting of pastor, elders, clerk and treasurer.*

A woman with curly hair is looking at a man from behind. They are in an outdoor setting, possibly near a train track. The image is framed in a blue oval with a white border.

How to locate former Members

- ***Based on your knowledge of the current attendance pattern, categorize each name under review by the following:***



How to locate former Members

- ***Weekly – W***
- ***Attends worship at least once a month - M***
- ***Less than once a month - IR***
- ***Once a year – Y***
- ***Has not attended in last 12-18 months – F***
- ***Shut-in's - S***

A photograph of a woman with curly hair looking at a man from behind, framed in a blue oval. The background shows a train track and trees.

How to locate former Members

- *Gone to school – Sch.*
- *Military – Mil.*
- *Moved out of the area - Moved*

A woman with curly hair is looking at a man from behind. They are in an outdoor setting, possibly near a train track. The image is framed by a blue oval with a white border.

How to locate former Members

Step two: Count the number of persons under each category and calculate the percentage of the membership in each category on a summary sheet.

Total:

- *Weekly*
- *Attends worship at least once a month*
- *Less than once a month*
- *Once a year*
- *Has not attended in last 12-18 months*
- *Shut-in*
- *Gone to school*
- *Military*
- *Moved out of the area*



Total:

Total inactive members _____

Percentage inactive members



Heaven is Counting on You!

**May God give you the boldness and
courage to go after His lost sheep!**

